

# UNITED®

## CONVECTOR HEATER WITH TURBO FUNCTION INSTRUCTIONS MANUAL



### UHC-929

**This product is only suitable for well insulated spaces or occasional use.  
Please read this instruction manual carefully before use and  
keep this instruction manual properly**

Please read and strictly follow the requirements contained in this manual.

**Note:** This product is only suitable for well-insulated spaces or occasional use.

## **IMPORTANT SAFETY INSTRUCTIONS**

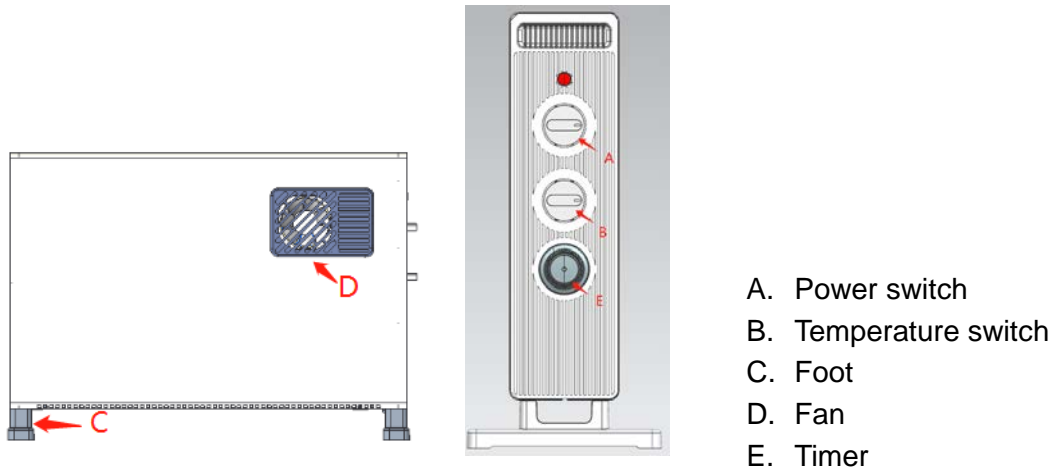
- Use only as described in this manual. **DO NOT** use this appliance for any other purpose other than this described in this manual.
- Keep the appliance and its cord out of the reach of children. **DO NOT** allow the appliance to be used by children. Make sure that children do not touch the device with their hands. **DO NOT** allow to be used as a toy. Close supervision is necessary when used near children.
- This appliance can be used by children aged from 8 years and above and by people with reduced physical, sensory, or mental capabilities or lack of experience and knowledge if they have been given supervision or instructions concerning use of the appliance in a safe way and understand the hazards involved. Cleaning and user maintenance shall not be done by children.
- When the heater is turned on for the first time, a characteristic smoke smell may occur due to the burning of oil in the heating elements. It is recommended to turn on the heater for 10-20 minutes in a well-ventilated area before installation.
- **DO NOT** leave the appliance unattended while powered on.
- **DO NOT** allow any foreign objects or liquids to enter the inside of the device. It is strictly forbidden to insert metal wires or other foreign objects into any holes in the machine to avoid electric shock accidents.
- **DO NOT** use with any blocked opening that may reduce airflow. If the inlet and outlet ducts become blocked, turn the heater off. Remove all obstructions before you turn on the unit again.
- Always place the appliance in such a way as to prevent the possibility of ignition of flammable materials (for example, curtains). Make sure nothing is blocking the inlet and outlet ducts. To avoid fire or overheating, **DO NOT** put clothing or other items on the device.
- **DO NOT** use the device in open spaces outdoors, wet or damp surfaces, spaces that are enclosed and may contain explosive or toxic fumes or vapors (lighter fluid, gasoline, kerosene, paint, paint thinners, moth proofing substances, or flammable dust).
- **DO NOT** handle plug or heater with wet hands.
- **DO NOT** use the convector with damaged and/or damaged or frayed power cable. If the supply cable is damaged it must be replaced by its customer service or similarly qualified person to avoid a hazard.
- When the heater is in use, the power cord should be placed behind the body. Placing it in front of the body will cause it to overheat or be damaged, or even cause a safety accident.
- If the device is not working properly, has been hit hard, dropped, damaged, left outdoors, or dropped into water, do not use it and contact the customer service.

- **DO NOT** use this heater as a thermal insulation heating device for animals and plants.
- Make sure that the mains voltage corresponds to that indicated on the label of the device.
- **DO NOT** stretch the cable or place the cable under strain. **DO NOT** close a door on the cable or pull the cable around sharp edges or corners. Arrange the cable away from traffic areas and where it will not be stepped on or tripped over. **DO NOT** run over the cable.
- **DO NOT** unplug by pulling on the cable. To unplug, grasp the plug, not the cable.
- Make sure that the bodies of the device and its heating element have cooled down, before the device is dismantled and packed for long-term storage.
- **DO NOT** try to repair the device yourself. Please contact customer service.
- Unplug the device from the mains when not in use and before cleaning.
- **DO NOT** place the heater on unstable surfaces such as chairs or tables.
- The two feet must be installed first and fixed with screws.

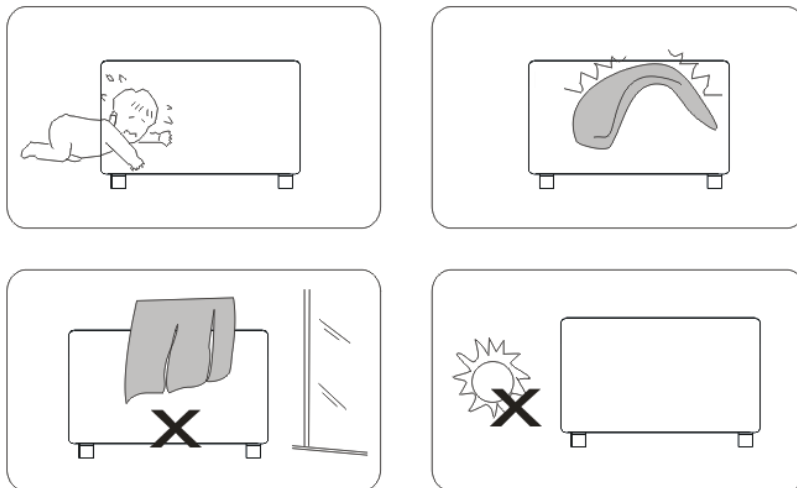
## PERFORMANCE CHARACTERISTICS

1. It heats up quickly and is ready to use:
2. Overheating safety protection
3. Two temperature levels with or without fan function
4. Timer 24hours

## PRODUCT DESCRIPTION

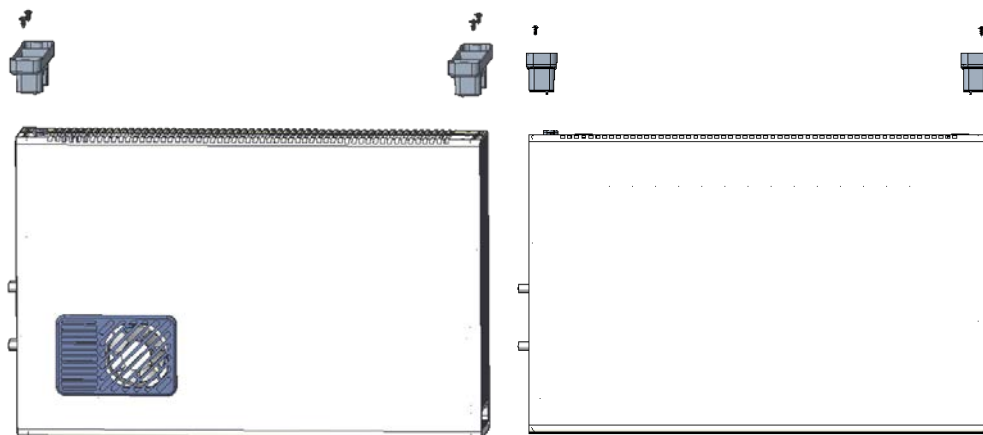


## PLACEMENT



## FOOT INSTALLATION

Turn the fuselage over with the bottom facing up and take out the four ST3.5\*12 screws and feet that come with it. Align the screw holes on the feet with the mounting holes on the bottom of the rear case, insert the screws through the round holes on the feet, and tighten the screws. After the installation is completed, flip the body over and straighten it, and it is ready for use.

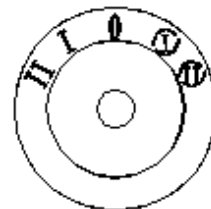


## OPERATING INSTRUCTIONS

### 1. Power control

After the heater is powered on, it is in standby mode. Switch the power to one of the following settings:

- Turn the switch to "I" for 1250W
- Turn the switch to "II" for 2000W
- Turn the switch to "(I)" for 1250W with Turbo fan
- Turn the switch to "(II)" for 2000W with Turbo fan
- Turn the switch to "O" position, the heater stops operating



### 2. Temperature control

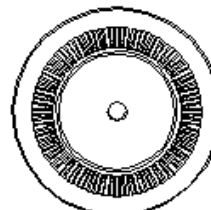
Switch the temperature to one of the following power settings:

- Turn the thermostat clockwise to increase the temperature from low to high.
- Turn the thermostat anticlockwise to decrease the temperature.



### 3. Timer

- Turn the switch corresponding to the number to turn on the timing time, which can be set from 1 to 24 hours.



## CLEANING AND MAINTENANCE

1. Before cleaning and maintenance, be sure to unplug the power cord, disconnect the power supply, and allow it to cool for 10 minutes before cleaning.
2. It is forbidden to rinse the fuselage with water. You can wipe it gently with a soft cloth containing a little neutral detergent and then wipe it dry. Do not use solvents such as gasoline.
3. After cleaning and maintenance, be sure to wait until it is fully dry before powering on for use or storage.
4. When not in use, please unplug the power cord plug from the power cord socket and put it away and cover it with a film bag to prevent dust. It is recommended to pack it in the original packaging box and store it in a dry place.

## TROUBLESHOOTING

If the product does not work or does not work properly, please first check the following list. If the product does not work or does not work properly as shown in the following clocks, the product may be faulty and it is recommended to return the product to a dealer.

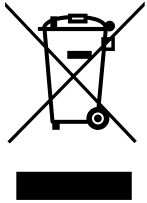
Problem	Possible causes of the problem	Solution
Heater does not heat	The plug is not inserted properly	Check whether the plug is correctly inserted into the socket
	The temperature control knob is not turned on	Turn the temperature control knob to the right
Sudden shutdown during heating	Temperature overheated, temperature limiter disconnected	Let it cool before use it again

**Note: Be sure to unplug the power cord before maintenance and ensure the machine is not connected to the power supply.**

Model identifier(s):		UHC-929			
Item	Symbol	Value	unit	Item	unit
<b>Heat output</b>				<b>Type of heat output/room temperature control (select one)</b>	
Nominal heat output	Pnom	2	kW	single stage heat output and no room temperature control	[no]
Minimum heat output (indicative)	Pmin	0,75	kW	Two or more manual stages, no room temperature control	[no]
Maximum continuous heat output	Pmax,c	2	kW	with mechanic thermostat room temperature control	[yes]
<b>Power consumption</b>				with electronic room temperature control	[no]
In off mode	Po	0.00	W	electronic room temperature control plus day timer	[no]
In standby mode	Psm	NA	W	electronic room temperature control plus week timer	[no]
<b>In idle mode</b>	Pidle	NA	W	<b>Other control options (multiple selections possible)</b>	
In network standby	Pnsm	NA	W	room temperature control, with presence detection	[no]
Standby mode with display of information or status			NO	room temperature control, with open window detection	[no]
Seasonal space heating energy efficiency in active mode	$\eta_{s,0n}$	85.5	%	distance control option	[no]
				adaptive start control	[no]
				working time limitation black	[no]
				bulb sensor	[no]
				self-learning functionality	[no]
				Control accuracy	[no]

<b>Contact details</b>	<b>KALLIOPI KARIDA &amp; CO, LP</b> 87A, 17is Noemvriou str, P.C. 55535, Pylaia, Greece T: +30 2316 006600 www.united-electronics.gr
------------------------	--

## CORRECT DISPOSAL OF THIS PRODUCT



This marking indicates that this product should not be disposed with other household wastes throughout the EU. To prevent possible harm to the environment or human health from uncontrolled waste disposal, recycle it responsibly to promote the sustainable reuse of material resources. To return your used device, please use the return and collection systems or contact the retailer where the product was purchased. They can take this product for environmental safe recycling.

## DECLARATION OF CONFORMITY

Herewith, we state that this product, complies with the requirements of below directives:

EMC-Directive: 14/30/EU

Low Voltage Directive: 14/35/EU

ErP Directive: 09/125/EC

CE Marking: 93/68/EEC

RoHS Directive: 11/65/EU & 15/863/EU

The detailed declaration of conformity can be found at [www.united-electronics.gr](http://www.united-electronics.gr).



### **KALLIOPI KARIDA & CO, LP**

87A, 17is Noemvriou str.,

P.C. 55535, Pylaia, Greece

T. +30 2316006600 | [www.united-electronics.gr](http://www.united-electronics.gr)